



Discover the beautiful in the simple things.

Since 2004, *stratmann* has been producing individual cutlery inserts made of wood. Our most important principle is to bring value to our customers, based on the usability and quality of our craft and our personal service.

stratmann offers exactly fitting solutions for all kinds of drawers. We support our customers in planning and realizing their drawer interior divisions. Our products are designed and made to measure for each single customer. Therefore they fit perfectly into the concept of every kitchen and any other room you want to equip. We produce drawer inserts for all kitchens and drawer systems and in any size, from „quantity 1“ to serial production.

The production by carpenters who know their craft and the use of high-quality solid wood characterize our high quality. All of our products are manufactured at our joinery in Germany. Here is the place where cutlery inserts are created with a quality that will last beyond the life of a kitchen. So enjoy the drawer interior in your kitchen, your dining room and your drawer inserts.

cutlery inserts for kitchens

AERIK four basic modules for the kitchen	6
CLASSIC exactly fitting cutlery inserts	8
EMPLEX design cutlery inserts made of veneered multiplex	34
MILANO design cutlery inserts made of solid wood	40
SINEX flexible cutlery trays	48
URBAN premium drawer inserts	52

cutlery inserts for silverware

ARGENTUM inserts for silverware	58
---	----

divisions for high pull-outs

CARGO NEO STELLA boxes for high pull-outs	64
BASE perforated boards for crockery and pots	76
ARMA ant-slip mats	80
PULL solutions for garbage cans	81

more for the kitchen

DETROIT butcherblock	82
MONTREAL cutting board	83
QUEBEC tray	83
TWORRY bottle holder	83

Ordering Information

how to measure	84
standard dimensions of drawers	85

AERIK | four basic modules for the kitchen

Our simple program AERIK is flexible and very easy to plan. It consists of just four modules with fixed dimensions and, like all our items, is made of real wood. The individual trays can be combined in the drawer flexibly. The depth of 472mm is standardized for most of the current drawer models. You can equip most cutlery drawers with the AERIK program and upgrade them with little effort. Unfortunately, only little changes in dimensions are possible with this program.

*bars: material: solid wood · profile: 50/9mm
connection: wooden dowels*

*ground: material: veneered plywood · thickness: 4mm
connection: folded on the long sides, short sides nailed*

possible dimensions: four standards

wood species



beech



oak



order number: 11AE 02062



width of insert: 200mm

order number: 11AE 03001



width of insert: 300mm

order number: 11AE 03062



width of insert: 300mm

order number: 11AE 04001



width of insert: 424mm



CLASSIC | exactly fitting cutlery inserts

The most popular and comprehensive series for the kitchen is our CLASSIC Line. The rectangular bars made of solid wood obtain a timeless elegance with maximum stability to the cutlery insert. The different series offer many possibilities to divide them, the various versions of the CLASSIC Line only differ according to the classification of the compartments. We offer different layout suggestions to accommodate cutlery and kitchen tools in a sensible and tidy way. The cutlery inserts are supplemented with useful accessories such as knife blocks, spice inserts or foil cutters.

At first, cutlery inserts create order in the drawer. But a kitchen is also enhanced by them. The drawer inserts generate a visually coherent and high-quality appearance to your kitchen. The CLASSIC cutlery insert with its warm, homely effect from the strips and the ground made from real wood. It combines the practical with the beautiful in a simple way.

The CLASSIC offers even more: We manufacture all inserts of this series up to a height of 100mm or shorten them for drawers under the stove.

*bars: material: solid wood · profile: 50/9mm
connection: wooden dowels*

*ground: material: veneered plywood · thickness: 4mm
connection: nailed*

possible dimensions: width: up to 1150mm · depth: up to 650mm

wood species



maple



beech



oak



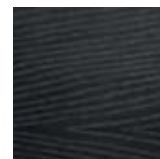
ash



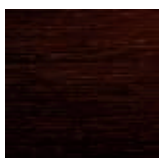
ash black



walnut



smoked oak



wengé



CUCINA CLASSIC

Made-to-measure cutlery inserts with a classic layout

The CUCINA series, with its functional, classic arrangement of compartments, is the basic model of our scope of delivery. It is based on the principle of at least three longitudinal and two transverse compartments. In addition, the cutlery tray offers the possibility of adding accessories to marked compartments (yellow). You will find suitable accessories from page 22 following.

The CUCINA CLASSIC is custom-made for every drawer from all manufacturers and can be ordered for all drawer dimensions.

possible dimensions: width: 0 to 1150mm · depth: 420 to 530mm



order number:	11CL 04062
	
for standard cabinet:	400mm
width of insert:	251-350mm


order number:	11CL 04562
	
for standard cabinet:	450mm
width of insert:	351-400mm


order number:	11CL 05062
	
for standard cabinet:	500mm
width of insert:	401-450mm


order number:	11CL 06062
	
for standard cabinet:	600mm
width of insert:	451-550mm

order number:	11CL 06072
	
for standard cabinet:	600mm
width of insert:	451-550mm

order number:	11CL 08062
	
for standard cabinet:	800mm
width of insert:	551-750mm

order number:	11CL 09062
	
for standard cabinet:	900mm
width of insert:	751-850mm

order number:	11CL 10062
	
for standard cabinet:	1000mm
width of insert:	851-950mm

order number:	11CL 12062
	
for standard cabinet:	1200mm
width of insert:	951-1150mm

CUCINA CLASSIC

in special depths

For drawers with various depth dimensions

We also supply the CUCINA CLASSIC series for drawers that are shortened or extra deep. So they fit perfectly in all drawers with a depth between 320 and 630mm. The series can also be used very well for cupboards in the living area.

possible dimensions:

width: 0 to 1150mm

depth: 320 to 410mm and 501 to 630mm

order number:	13CL 04062
---------------	------------



depth of insert:	501 - 630mm
------------------	-------------

width of insert:	251 - 350mm
------------------	-------------

order number:	16CL 04062
---------------	------------



depth of insert:	320 - 410mm
------------------	-------------

width of insert:	251 - 350mm
------------------	-------------



order number:	13CL 05062
	
depth of insert:	501 - 630mm
width of insert:	351 - 450mm

order number:	13CL 06062
	
depth of insert:	501-630mm
width of insert:	451-550mm

order number:	13CL 08062
	
depth of insert:	501-630mm
width of insert:	551-750mm

order number:	13CL 09062
	
depth of insert:	501-630mm
width of insert:	751-850mm

order number:	13CL 10062
	
depth of insert:	501-630mm
width of insert:	851-950mm

order number:	13CL 12062
	
depth of insert:	501-630mm
width of insert:	951-1150mm

order number:	16CL 05062
	
depth of insert:	320 - 410mm
width of insert:	351 - 450mm

order number:	16CL 06062
	
depth of insert:	320-410mm
width of insert:	451-550mm

order number:	16CL 08062
	
depth of insert:	320-410mm
width of insert:	551-750mm

order number:	16CL 09062
	
depth of insert:	320-410mm
width of insert:	751-850mm

order number:	16CL 10062
	
depth of insert:	320-410mm
width of insert:	851-950mm

order number:	16CL 12062
	
depth of insert:	320-410mm
width of insert:	951-1150mm

TISLA CLASSIC

Made-to-measure cutlery inserts with a classic layout

With the division TISLA, the new version of our cutlery inserts divided lengthways, you can organize your cutlery and make optimal use of the space in the drawer. The drawer inserts of the TISLA series offer the possibility of adding accessories to the compartments with a width of 195mm (blue). You will find suitable accessories from page 22 following.

The TISLA CLASSIC is custom-made for every drawer from all manufacturers and can be ordered for all drawer dimensions.

possible dimensions: width: up to 1150mm · depth: 420 to 530mm



order number:	11CL 03001
	
for standard cabinet:	300mm
width of insert:	100-250mm

order number:	11CL 04001
	
for standard cabinet:	400mm
width of insert:	251-300mm

order number:	11CL 04501
	
for standard cabinet:	450mm
width of insert:	300-350mm

order number:	11CL 05001
	
for standard cabinet:	500mm
width of insert:	351-450mm

order number:	11CL 06001
	
for standard cabinet:	600mm
width of insert:	451 - 550mm

order number:	11CL 08001
	
for standard cabinet:	800mm
width of insert:	551-750mm

order number:	11CL 09001
	
for standard cabinet:	900mm
width of insert:	751-850mm

order number:	11CL 10001
	
for standard cabinet:	1000mm
width of insert:	851-950mm

order number:	11CL 12001
	
for standard cabinet:	1200mm
width of insert:	951-1150mm

OPTION CLASSIC [Blue Line]

Custom-made inserts for kitchen utensils

The OPTION insert for kitchen utensils offers the possibility of storing large serving items and kitchen tools such as cooking spoons or soup ladles in an orderly manner. In addition, accessories such as knife blocks, spice inserts and others can be perfectly integrated.

Colored areas indicate where accessories can be planned. There are two variants, first a planning width of 145mm (yellow compartment) and second 195mm (blue compartment). You can find the items belonging to them in the accessories section starting on page 22. We can realize reduced depths or extra depths on request.

possible dimensions:

width: 180 to 1150mm

depth: 420 to 530mm



order number:	11CL 03010
	
for standard cabinet:	300mm
width of insert:	100-250mm

order number:	11CL 04020
	
for standard cabinet:	400mm
width of insert:	251-300mm

order number:	11CL 04520
	
for standard cabinet:	450mm
width of insert:	300-350mm

order number:	11CL 05020
	
for standard cabinet:	500mm
width of insert:	351-450mm

order number:	11CL 06030
	
for standard cabinet:	600mm
width of insert:	451-550mm

order number:	11CL 08040
	
for standard cabinet:	800mm
width of insert:	551-750mm

order number:	11CL 09050
	
for standard cabinet:	900mm
width of insert:	751-850mm

order number:	11CL 10050
	
for standard cabinet:	1000mm
width of insert:	851-950mm

order number:	11CL 12070
	
for standard cabinet:	1200mm
width of insert:	951-1150mm

OPTION CLASSIC [Yellow Line]

Custom-made inserts for kitchen utensils

The OPTION insert for kitchen utensils offers the possibility of storing large serving items and kitchen tools such as cooking spoons or soup ladles in an orderly manner. In addition, accessories such as knife blocks, spice inserts and others can be perfectly integrated.

Colored areas indicate where accessories can be planned. There are two variants, first a planning width of 145mm (yellow compartment) and second 195mm (blue compartment). You can find the items belonging to them in the accessories section starting on page 22. We can realize reduced depths or extra depths on request.

possible dimensions:

width: 180 to 1150mm

depth: 420 to 530mm



order number:	11CL 04033
	
for standard cabinet:	400mm
width of insert:	251-300mm

order number:	11CL 04533
	
for standard cabinet:	450mm
width of insert:	300-350mm

order number:	11CL 05023
	
for standard cabinet:	500mm
width of insert:	351-450mm

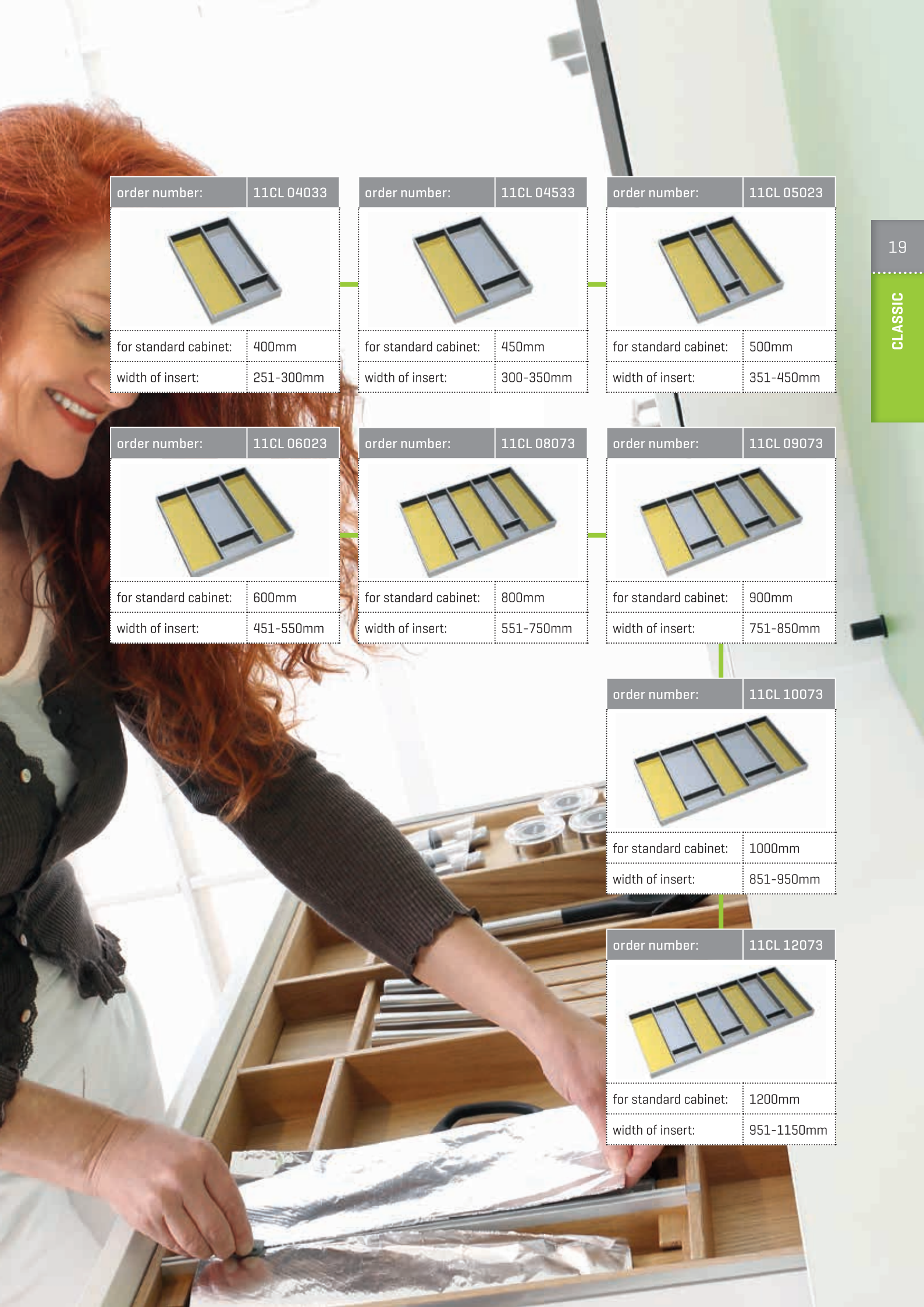
order number:	11CL 06023
	
for standard cabinet:	600mm
width of insert:	451-550mm

order number:	11CL 08073
	
for standard cabinet:	800mm
width of insert:	551-750mm

order number:	11CL 09073
	
for standard cabinet:	900mm
width of insert:	751-850mm

order number:	11CL 10073
	
for standard cabinet:	1000mm
width of insert:	851-950mm

order number:	11CL 12073
	
for standard cabinet:	1200mm
width of insert:	951-1150mm



FREE CLASSIC

Drawer inserts according to customer's sketch.

The FREE CLASSIC series offers the possibility of completely free planning an individual drawer insert. You can design your insert exactly for your cutlery and serving items or whatever else needs to be fixed in the drawer. All you have to do is sending a simple sketch. We create a drawing, submit an offer for you and, after your approval, produce the drawer insert exactly according to your specifications.

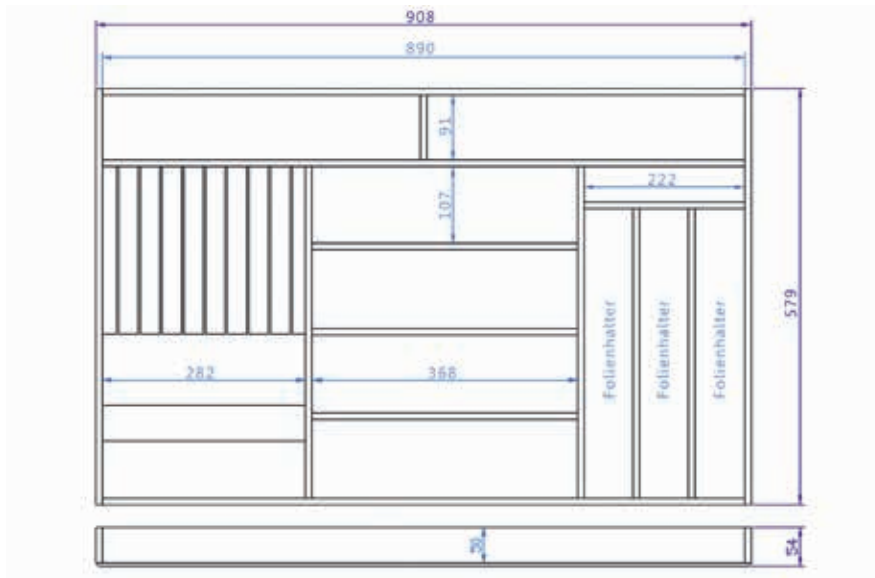
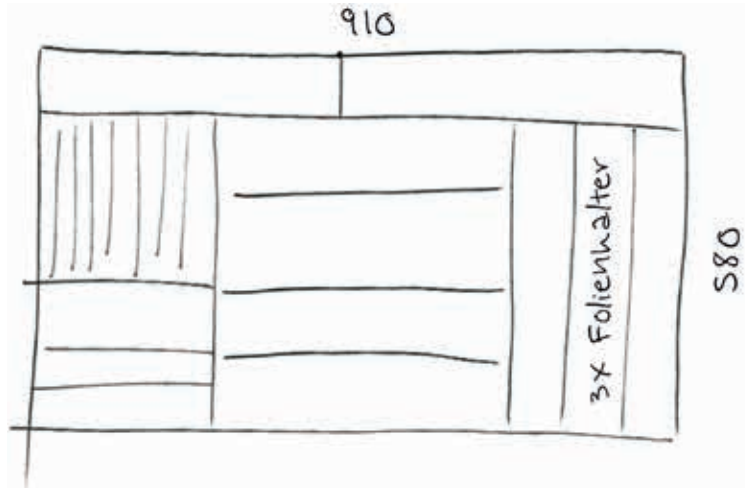
possible dimensions:

width: 100 to 1150mm

depth: 100 to 650mm

width of insert	order number
0-250mm	11CL 03000
251-350mm	11CL 04000
351-450mm	11CL 05000
451-550mm	11CL 06000
551-650mm	11CL 07000
651-750mm	11CL 08000
751-850mm	11CL 09000
851-950mm	11CL 10000
951-1050mm	11CL 11000
1051-1150mm	11CL 12000







ADD CLASSIC | accessories for the CLASSIC series

Our ADD accessories are designed for compartments marked yellow or blue in the CLASSIC cutlery insert range. Colored fields in the different series show where accessories can be placed. Accessories with a width of 145mm are fitting in the yellow compartment and accessories with a width of 195mm in the blue compartment.

So complete the cutlery insert with useful accessories such as knife blocks, foil holders, spice inserts and spice mills.

knife block ZMB

Keep your kitchen knives organized and safe in a solid wood knife block.



knife block ZMM

Clearly arranged and stored stylish: each knife is held by two magnets.



knife block ZMS

Our knife block for steak knives or for universal and peeling knives with a blade of up to 120mm.



article	order number	width	suitable for	model
knife block ZMB	11ZC ZMB03	95mm		for 3 knives
knife block ZMB	11ZC ZMB04	145mm	yellow compartment	for 4 knives
knife block ZMB	11ZC ZMB05	175mm		for 5 knives
knife block ZMB	11ZC ZMB06	195mm	blue compartment	for 6 knives
knife block ZMB	11ZC ZMB09	295mm		for 9 knives
knife block ZMM	11ZC ZMM05	145mm	yellow compartment	for 5 knives, with magnet holders
knife block ZMM	11ZC ZMM07	195mm	blue compartment	for 7 knives, with magnet holders
knife block ZMS	11ZC ZMS04	85mm		for 4 steak knives or peeling knives
knife block ZMS	11ZC ZMS06	144mm		for 6 steak knives or peeling knives

kitchen knives of **FELIX**

The series FIRST CLASS WOOD by FELIX impresses with its special charisma thanks to the handle made of solid olivewood. The blades are forged from a single piece, vacuum and ice hardened. This guarantees a long-lasting sharpness and resistance to corrosion.



The First Class knives are lying perfectly in the hand, thanks to their ergonomic shape and balanced weight. The FIRST CLASS WOOD is characterized by its timeless design and fantastic quality.

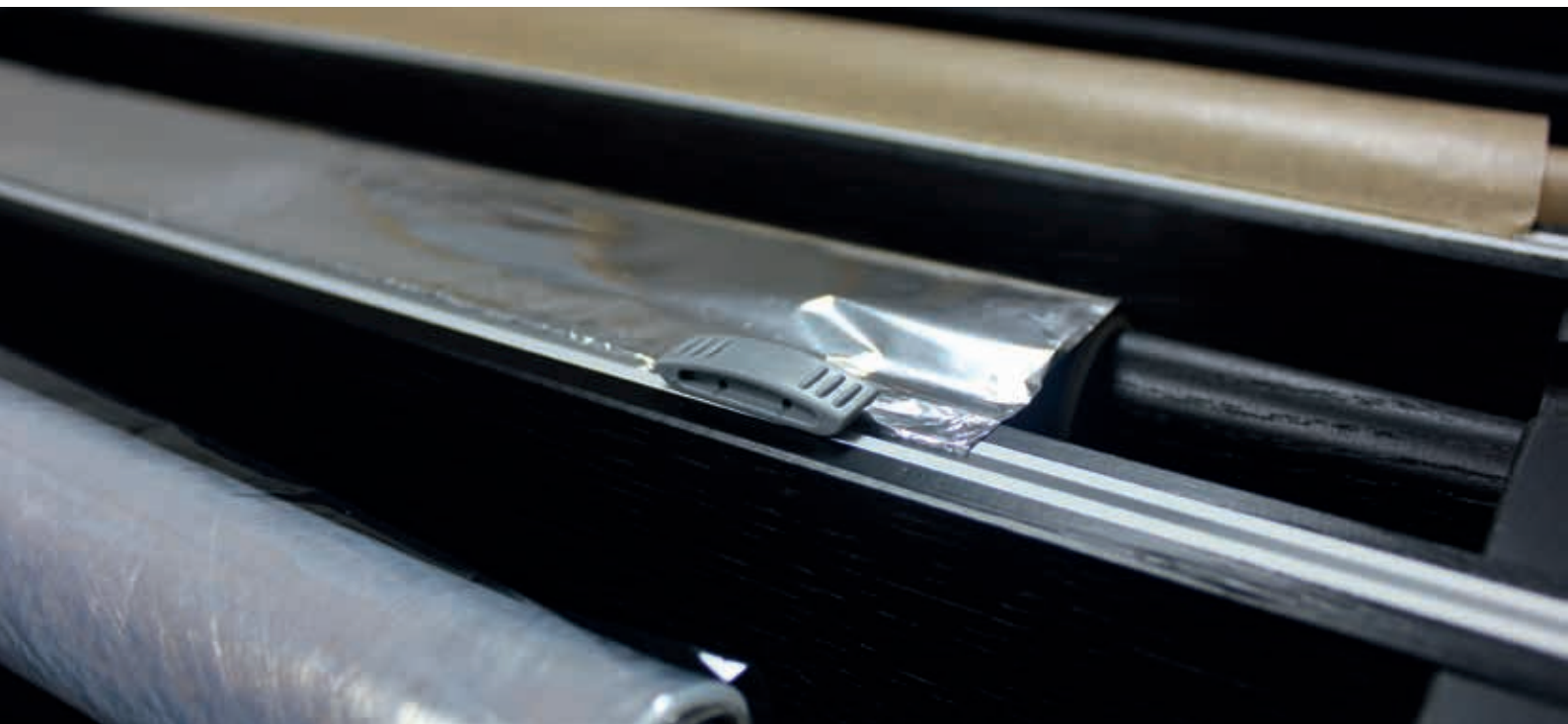
Set	order number	knives
4 knives	10HA FXWS4	chef knife, length of blade 21cm bread knife, length of blade 22cm Santoku, length of blade 18cm utility knife, length of blade 15cm
5 knives	10HA FXWS5	+ paring knife, length of blade 9cm
6 knives	10HA FXWS6	+ carving knife, length of blade 18cm
7 knives	10HA FXWS7	+ tomato knife, length of blade 13cm



foil cutter ZFC

The easy and clever alternative regarding the ZFA: Cut any type of film with the knife, which can be moved in the center wall.

Available in two versions: with the first one, the cutting rail is already planed with the cutlery insert and will be permanently installed into the insert. The second version is supplied with a frame, suitable for fitting into the yellow compartment or the blue compartment.



foil holder ZFA

The foil holder is designed for an aluminum foil and a cling film as well as for baking paper. Within using the serrations of the lid made of stainless steel, the foils can be torn off. In our ADD program, we build the foil holder firmly into the cutlery insert.



kitchen scales ZWA

The ZWAA1 set consists of an embedded kitchen scale and a stainless steel mixing bowl. The minimum height for installation is 100mm, for drawers that are flatter, the mixing bowl can be left out. The scales are planned in a blue compartment.

The mixing bowl has got a diameter of 200mm, a height of 90mm and a volume of 2 liters.



article	order number	width	suitable for	model
foil cutter ZFC	11ZC ZFC02	145mm	yellow compartment	permanently installed in the insert
foil cutter ZFC	11ZC ZFC03	220mm	blue compartment	permanently installed in the insert
foil cutter ZFC	11CL ZFC12	144mm	yellow compartment	frame without bottom
foil cutter ZFC	11CL ZFC13	194mm	blue compartment	frame without bottom
foil holder ZFA	11ZC ZXF02	145mm	yellow compartment	permanently installed in the insert
foil holder ZFA	11ZC ZFA03	220mm	blue compartment	permanently installed in the insert
kitchen scales ZWA	11ZC ZWAA1	195mm	blue compartment	loosely inserted in the cutlery box

spice insert ZGE

We offer spice inserts for standing jars including the matching storage cans made of stainless steel. The tins are great for storing spices and will fit upright in any drawer with a standard height of at least 75mm. For blue or yellow compartment or custom-made. Delivery includes spice jars made of stainless steel.

New: Including labels of the most commonly used spices.



article	order number	width	suitable for	model
spice insert ZGE	11ZC ZXGA5	145mm	yellow compartment	inkl. Set HG105 + HG205
spice insert ZGE	11ZC ZXGB5	145mm	yellow compartment	inkl. 2x HG205
spice insert ZGE	11ZC ZG2A5	195mm	blue compartment	inkl. Set HG105 + HG205
spice insert ZGE	11ZC ZG2B5	195mm	blue compartment	inkl. 2x Set HG205

spice jars for ZGE and ZST

The cans are entirely made of stainless steel and are available with different lids.

Our Set 1 includes a salt and a pepper shaker, as well as two fine shakers and two coarse shakers. Set 2 consists of six cans with acrylic glass lids.

dimensions: 50 x 70mm (diameter x height)

content: circa 130ml

10HA HG105



10HA HG205



article	order number	diameter	height
spice jars Set 1	10HA HG105	50mm	70mm
spice jars Set 2	10HA HG205	50mm	70mm
spice jar with acrylic glass lid	10HA BE05A	50mm	70mm
salt shaker	10HA BE05S	50mm	70mm
pepper shaker	10HA BE05P	50mm	70mm
fine spreader	10HA BE05F	50mm	70mm
coarse spreader	10HA BE05G	50mm	70mm



combined spice insert **ZST**

In this insert, the most important kitchen utensils referring to spices find a place. The ZSTA4 and ZSTA9 spice inserts are supplied with a salt and a pepper mill, as well as six respectively ten spice jars with different lids.



holder for spice mills **ZGM**

This storage option for six spice mills is a visual highlight of our range.

The matching set consists of six mills that are lying exactly in the solid wood profiles of the holder.



spice mills for **ZGM** and **ZST**

The Berghoff DUO spice mills, with ceramic grinding mechanism on the bottom and shaker on the top. For coarse salt, peppercorns, chili flakes, garlic, ...

dimensions: 170 x 50mm



article	order number	width	suitable for	model
combined insert ZST	11ZC ZSTA4	145mm	yellow compartment	incl. 2 mills and 6 spice shakers
combined insert ZST	11ZC ZSTA9	195mm	blue compartment	incl. 2 mills and 10 spice shakers
holder for spice mills ZGM	11ZC ZGM06	195mm	blue compartment	without mills
holder for spice mills ZGM	11ZC ZGMA6	195mm	blue compartment	inclusive 6 mills

article	order number	diameter	height
spice mill DUO [1 piece]	10HA HGM01	50mm	170mm
spice mill set DUO [6 pieces]	10HA HGM06	50mm	170mm



spice insert ZFU

Completely made from solid wood, the ZFU is a precious wedge-shaped spice insert with milled grooves. Thanks to these grooves, the spice jars are fixed in place. The spice jar is tailored for most standard tall but thin spice jars, suitable for all glasses with a diameter of up to 45mm and a maximum height of 140mm. For blue or yellow compartment or custom-made.

Delivery includes spice jars made of glass and labels of the most commonly used spices.



Glass spice jars for ZFU

Spice jars in a classic design for all types of spices. The dual cap has got a 4-hole opening for sprinkling and on the other side there is a large opening for pouring.

dimensions: 45 x 124mm (diameter x height)

content: circa 110ml



spice steps ZGT

Due to the step shape, this universal spice insert offers the possibility to store cans of different sizes. It is handcrafted from veneered MDF.

For blue or yellow compartment or custom-made to any width.



hand blender ZMI

The holder ZMIX includes a hand blender. A knife and a whisk are included as well as accessories for the mixer.

For blue or yellow compartment.



article	order number	width	suitable for	model
spice insert ZFU	11ZC ZFU06	95mm		incl. glass spice jars
spice insert ZFU	11ZC ZFU09	145mm	yellow compartment	incl. glass spice jars
spice insert ZFU	11ZC ZFU12	195mm	blue compartment	incl. glass spice jars
glass spice jar	10HA ZFU01	Ø 45mm	ZFU	glass spice jar
spice steps ZGT	11ZC ZGT01	145mm	yellow compartment	without spices
spice steps ZGT	11ZC ZGT02	195mm	blue compartment	without spices
hand blender ZMI	11ZC ZMIXX	145mm	yellow compartment	incl. hand blender
hand blender ZMI	11ZC ZMIX2	195mm	blue compartment	incl. hand blender

EMPLEX | design cutlery inserts made of veneered multiplex

The cutlery insert EMPLEX gets an extravagant look from the edges of the strips, where the multiplex layers with dark glue joints remain visible. Despite the contrasting edges, the warm solid character of the wood, thanks to the veneered surfaces, is retained. The choice of material and the perfect workmanship make the EMPLEX something very special. It is made to measure for each drawer.

*bars: veneered multiplex with visible edges · profile 50 x 7.5mm
connection V-jointed / on mitre*

*ground: material: veneered plywood · thickness circa 4mm
connection nailed*

possible dimensions: width: up to 1150mm · depth: up to 650mm

wood species



maple



oak



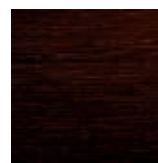
ash black



walnut



smoked oak



wengé



CUCINA EMPLEX

Made-to-measure cutlery inserts made of veneered multiplex

The CUCINA series, with its functional, classic arrangement of compartments, is the basic model of our scope of delivery. It is based on the principle of at least three longitudinal and two transverse compartments.


In addition, the cutlery tray offers the possibility of adding accessories to marked compartments (yellow). You will find suitable accessories of the EMPLEX series from page 46 following.

The CUCINA CLASSIC is custom-made for every drawer from all manufacturers and can be ordered for all drawer dimensions.

possible dimensions:

width: 0 to 1150mm · depth: 420 bis 530mm



order number:	11MP 04062
	
for standard cabinet:	400mm
width of insert:	251-350mm

order number:	11MP 04562
	
for standard cabinet:	450mm
width of insert:	351-400mm


order number:	11MP 05062
	
for standard cabinet:	500mm
width of insert:	401-450mm


order number:	11MP 06062
	
for standard cabinet:	600mm
width of insert:	451-550mm

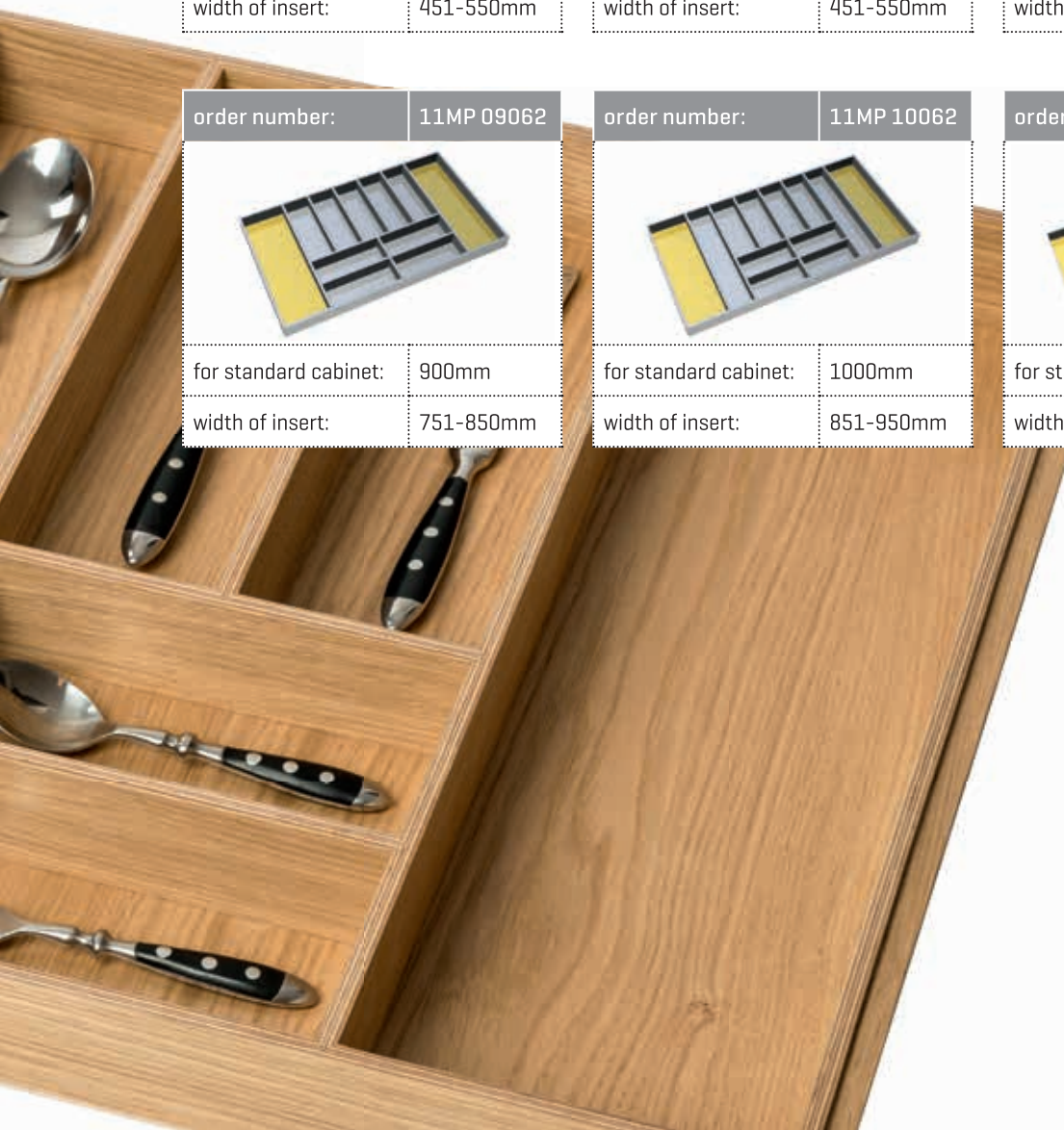
order number:	11MP 06072
	
for standard cabinet:	600mm
width of insert:	451-550mm

order number:	11MP 08062
	
for standard cabinet:	800mm
width of insert:	551-750mm

order number:	11MP 09062
	
for standard cabinet:	900mm
width of insert:	751-850mm

order number:	11MP 10062
	
for standard cabinet:	1000mm
width of insert:	851-950mm

order number:	11MP 12062
	
for standard cabinet:	1200mm
width of insert:	951-1150mm



OPTION EMPLEX

Custom-made inserts for kitchen utensils made of veneered multiplex

The OPTION insert for kitchen utensils offers the possibility of storing large serving items and kitchen tools such as cooking spoons or soup ladles in an orderly manner. In addition, accessories such as knife blocks, spice inserts and others can be perfectly integrated.

Colored areas indicate where accessories can be planned. There are two variants, first a planning width of 145mm (yellow compartment). You can find the items belonging to them in the accessories section starting on page 46. We can realize reduced depths or extra depths on request.

possible dimensions:

width: 0 to 1150mm

depth: 420 to 530mm



order number:	11MP 04033
	
for standard cabinet:	400mm
width of insert:	251-300mm

order number:	11MP 04533
	
for standard cabinet:	450mm
width of insert:	300-350mm

order number:	11MP 05023
	
for standard cabinet:	500mm
width of insert:	351-450mm

order number:	11MP 06023
	
for standard cabinet:	600mm
width of insert:	451-550mm

order number:	11MP 08073
	
for standard cabinet:	800mm
width of insert:	551-750mm

order number:	11MP 09073
	
for standard cabinet:	900mm
width of insert:	751-850mm

order number:	11MP 10073
	
for standard cabinet:	1000mm
width of insert:	851-950mm

order number:	11MP 12073
	
for standard cabinet:	1200mm
width of insert:	951-1150mm

MILANO | design cutlery inserts made of solid wood

The same profile, another material: For the production of the precious MILANO program we use a 7.5mm thin bar made of solid wood. Thanks to the slim, linear design, this cutlery insert fits well in a modern kitchen and a calm impression is achieved. Especially in kitchens with white or gray fronts, the wood forms a lovely warm contrast. It is made to measure for each drawer.

*bars: solid wood · profile 50 x 7.5mm
connection V-jointed / on mitre*

*ground: material: veneered plywood · thickness circa 4mm,
connection nailed*

possible dimensions: width: up to 1150mm · depth: up to 650mm

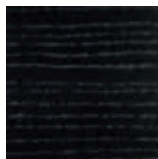
wood species



maple



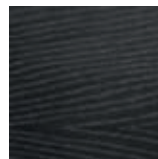
oak



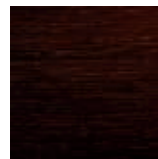
ash black



walnut



smoked oak



wengé



CUCINA MILANO

Made-to-measure cutlery inserts with a classic layout

The CUCINA division combined with the MILANO bars is the right choice for a cutlery insert that contains everyday cutlery on the one hand and is intended to look classy and elegant on the other.

As with all CUCINA divisions, accessories can be placed in the yellow compartments. Matching accessories can be found from page 46.

The CUCINA MILANO is custom-made for every drawer from all manufacturers and can be ordered for all drawer dimensions.

possible dimensions: width: 0 to 1150mm · depth: 420 to 530mm



order number:	11MI 04062
	
for standard cabinet:	400mm
width of insert:	251-350mm

order number:	11MI 04562
	
for standard cabinet:	450mm
width of insert:	351-400mm

order number:	11MI 05062
	
for standard cabinet:	500mm
width of insert:	401-450mm

order number:	11MI 06062
	
for standard cabinet:	600mm
width of insert:	451-550mm

order number:	11MI 06072
	
for standard cabinet:	600mm
width of insert:	451-550mm

order number:	11MI 08062
	
for standard cabinet:	800mm
width of insert:	551-750mm

order number:	11MI 09062
	
for standard cabinet:	900mm
width of insert:	751-850mm

order number:	11MI 10062
	
for standard cabinet:	1000mm
width of insert:	851-950mm

order number:	11MI 12062
	
for standard cabinet:	1200mm
width of insert:	951-1150mm

OPTION MILANO

Custom-made inserts for kitchen utensils

The OPTION insert for kitchen utensils offers the possibility of storing large serving items and kitchen tools such as cooking spoons or soup ladles in an orderly manner. In addition, accessories such as knife blocks, spice inserts and others can be perfectly integrated.

Colored areas indicate where accessories can be planned with a width of 145mm (yellow compartment). You can find the items belonging to them in the accessories section starting on page 46.

We can realize reduced depths or extra depths on request.

possible dimensions: width: 0 to 1150mm · depth: 420 to 530mm



order number:	11MI 04033
	
for standard cabinet:	400mm
width of insert:	251-300mm

order number:	11MI 04533
	
for standard cabinet:	450mm
width of insert:	300-350mm

order number:	11MI 05023
	
for standard cabinet:	500mm
width of insert:	351-450mm

order number:	11MI 06023
	
for standard cabinet:	600mm
width of insert:	451-550mm

order number:	11MI 08073
	
for standard cabinet:	800mm
width of insert:	551-750mm

order number:	11MI 09073
	
for standard cabinet:	900mm
width of insert:	751-850mm

order number:	11MI 10073
	
for standard cabinet:	1000mm
width of insert:	851-950mm

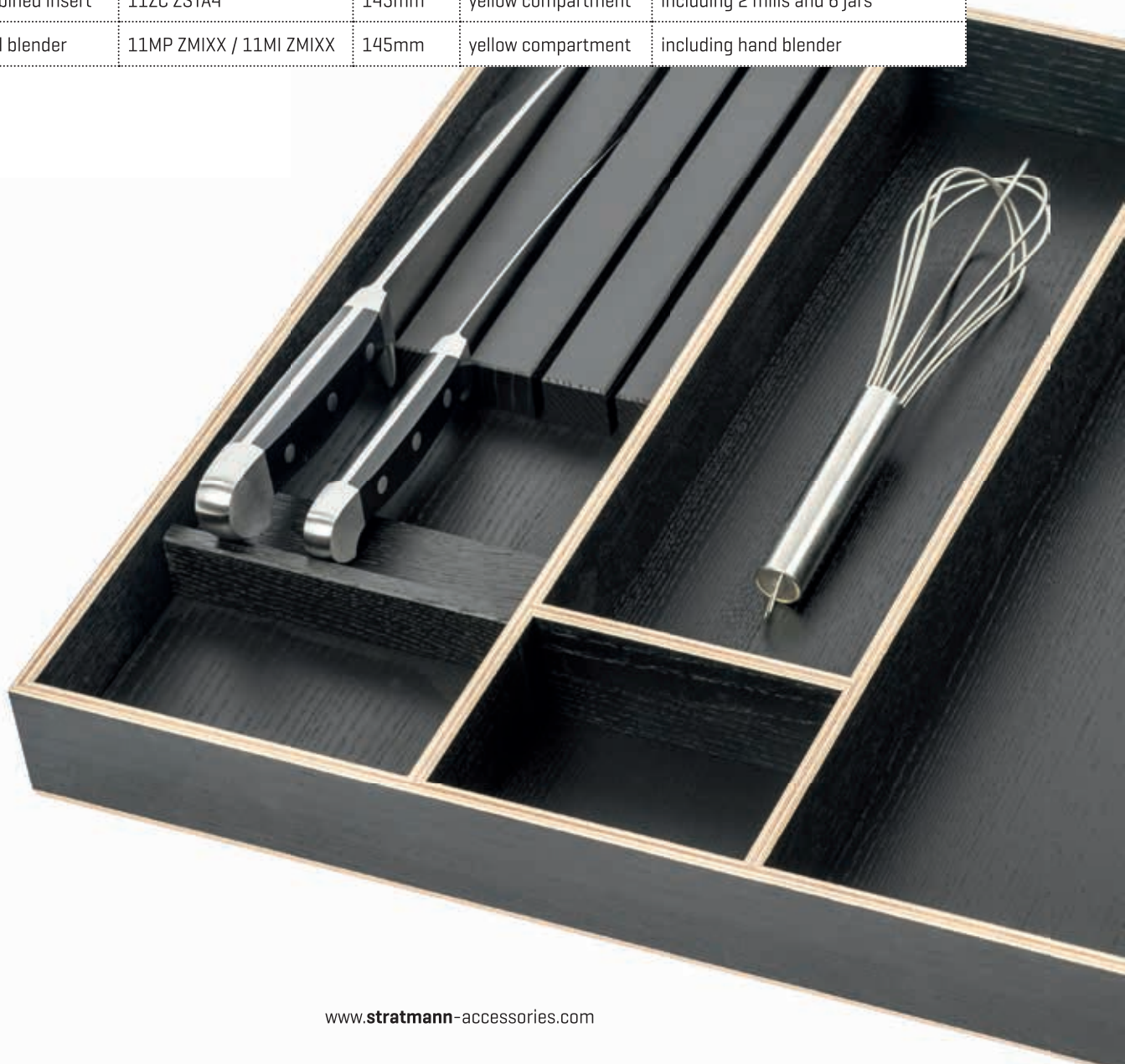
order number:	11MI 12073
	
for standard cabinet:	1200mm
width of insert:	951-1150mm



Accessories for EMPLEX and MILANO

Exactly fitting for *yellow compartment* in EMPLEX and MILANO

article	order number	width	suitable for	model
knife block	11ZC ZMB04	145mm	yellow compartment	for 4 knives
knife block	11ZC ZMM05	145mm	yellow compartment	for 5 knives
foil holder	11MP ZXF02 / 11MI ZXF02	145mm	yellow compartment	permanently installed
foil cutter	11MP ZFC12 / 11MI ZFC12	144mm	yellow compartment	frame only
spice insert	11ZC ZXGA5	145mm	yellow compartment	including set HG105 and HG205
spice insert	11ZC ZXGB5	145mm	yellow compartment	including set 2x HG205
spice insert	11ZC ZFU09	145mm	yellow compartment	including glass jars
combined insert	11ZC ZSTA4	145mm	yellow compartment	including 2 mills and 6 jars
hand blender	11MP ZMIXX / 11MI ZMIXX	145mm	yellow compartment	including hand blender





SINEX | flexible cutlery trays

The SINEX program reduces the drawer division to the essentials. The modular structure allows drawers to be designed flexibly.

The bars of the SINEX are made of 7.5mm thin bars and the items are produced without a ground. Twelve modules for cutlery, kitchen tools and other accessories can be freely combined in the drawer. A base plate for the drawer can also be ordered, covered with our natural wool felt in heather gray or anthracite black.

If the modules are only placed in the middle of the drawer, the inner sides of the drawer remain visible on the left and right. The drawer appears larger and puristically reduced to its essentials.

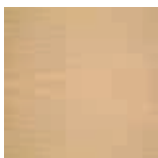
*bars: material: veneered multiplex · profile: 50/7.5mm
connection: on mitre*

ground: moduls without ground · base plate with felt

possible dimensions:

width: various elements up to 250mm · depth: up to 650mm

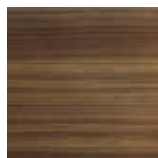
wood species



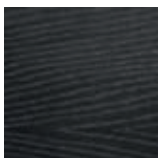
maple



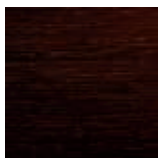
oak



walnut



smoked oak



wengé

felt colors




anthracite black



heather grey







SINEX base plates and moduls

plate covered with natural felt	width	heather grey	anthracite black
	0 bis 550mm	11TC 00061	11TC 00062
	551-650mm	11TC 00071	11TC 00072
	651-750mm	11TC 00081	11TC 00082
	751-850mm	11TC 00091	11TC 00092
	851-950mm	11TC 00101	11TC 00102
	951-1050mm	11TC 00111	11TC 00112
	1051-1150mm	11TC 00121	11TC 00122



order number:	11SI 01010	order number:	11SI 01012	order number:	11SI ZFU06
					
cutlery insert 100mm		cutlery insert 100mm		spice insert 100mm	

order number:	11SI ZMB04	order number:	11SI ZGH31	order number:	11SI ZFC02
					
knife block 150mm		spice insert 150mm		foil cutter 150mm	

order number:	11SI 02010	order number:	11SI 02062	order number:	11SI ZMB06	order number:	11SI ZGT02
							
cutlery insert 200mm		cutlery insert 200mm		knife block 200mm		spice steps 200mm	

order number:	11SI 02562	order number:	11SI 02507
			
cutlery insert 250mm		cutlery insert 250mm	

URBAN | premium drawer inserts

Our URBAN program offers genuine craftsmanship. It is characterized by details such as finger-jointed frames and six millimeter thin bars. Ground and frame are connected by a groove, so the ground is not visible from the outside.

The URBAN is perfectly matched to the exterior of the kitchen. In addition to our standard woods, stained and laquered colors are possible according to customer requirements.

The series also offers great freedom in planning. The width and depth of the individual modules are planed according to the dimensions of the drawer, so in the end the entire drawer is fully equipped. Just like for all of our commissions, you will receive a detailed drawing of all dimensions and divisions before production.

bars: solid wood · profile 57/6mm · frames finger-jointed

ground: grooved

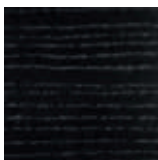
possible dimensions:

width: various moduls to 500mm · depth: up to 650mm

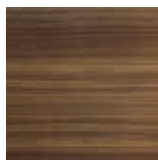
wood species



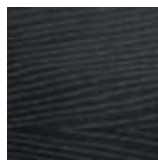
oak



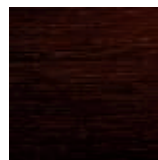
ash black



walnut



smoked oak



wengé

stain and laquer
colors according
to customer





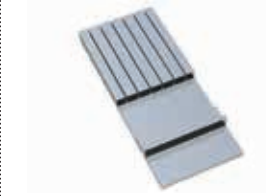







order number: 11UR 01010	order number: 11UR 01012	order number: 11UR ZFU06	order number: 11UR ZMIXX
			
cutlery insert 100mm	cutlery insert 100mm	spice insert 100mm	hand blender 150mm

order number: 11UR 01510	order number: 11UR ZFC02	order number: 11UR ZMB04	order number: 11UR ZXG05
			
cutlery insert 150mm	foil cutter 150mm	knife block 150mm	spice insert 150mm

order number: 11UR 02010	order number: 11UR 02062	order number: 11UR ZMB06	order number: 11UR ZFU12
			
cutlery insert 200mm	cutlery insert 200mm	knife block 200mm	spice insert 200mm

order number: 11UR ZGMA6	order number: 11UR ZFC03	order number: 11UR 02562	order number: 11UR 02507
			
spice mills 200mm	foil cutter 200mm	cutlery insert 250mm	cutlery insert 250mm

order number: 11UR ZWAA2	order number: 11UR ZMB09
	
kitchen scales 250mm	knife block 300mm

ARGENTUM | cutlery inserts for silver cutlery

Finest cutlery needs an appropriate storage. The ARGENTUM program has no compartments for cutlery, but consists of a felt-covered base plate or a tray. Both can be combined with our cutlery holders. Thereby each piece of cutlery is neatly and securely in its own place. The holders are made of wood and covered with felt that matches the color of the ground.

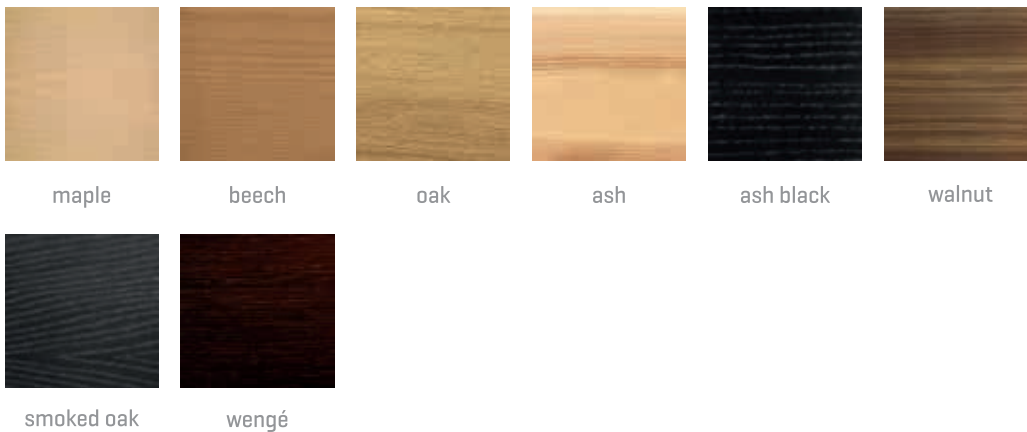
We support you in planning the right number and position of holders for your cutlery and serving items. You can order complete cutlery sets or have an individual solution created for your cutlery. We also offer other accessories such as covers for the silvery or handles for the trays. At stratmann, the presentation of the cutlery, covered with anti-tarnish felt on the inside and a frame made of solid wood on the outside, is interpreted in a modern way but traditionally made by hand.

*bars: material: solid wood · covered with felt · profile: 50/9mm or 61/9mm
connection: finger-jointed*

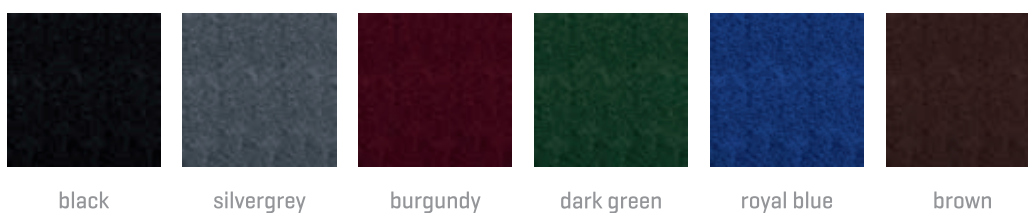
*ground: material: veneered plywood covered with felt · total thickness circa 4mm
connection PUR: nailed · connection DELUXE: grooved*

possible dimensions: width: up to 1150mm · depth: up to 650mm

wood species



colors of felt





ARGENTUM base plate

If you want to do without a frame, we can supply the base plate made of a MDF material with a thickness of about six millimeters, covered with our anti-tarnish felt.

*possible dimensions:
width: up to 1150mm · depth: up to 630mm*



ARGENTUM PUR

Our PUR ARGENTUM model is a cutlery tray with a finger-jointed frame made of solid wood and a felt-covered ground. We use our CLASSIC bar, where even the inner sides are covered with felt. The PUR is manufactured in the standard height of 54mm or in larger version with a height of 65mm especially for bigger service pieces.

*bars: solid wood · profile 50/9mm or 65/9mm
ground: plywood covered with felt · thickness circa 4mm*



ARGENTUM DELUXE

The DELUXE series adds a few extras to the PUR model. The height is 50 or 65mm, but the ground is grooved. Because of that, heavy cutlery trays can be taken out of the drawer without the risk of tearing out the ground.

Optionally, the DELUXE cutlery tray can be ordered with stacking bars and / or with handles or grip holes. This means that the boxes can be stored not only in drawers, but also comfortably in a cupboard behind some doors.

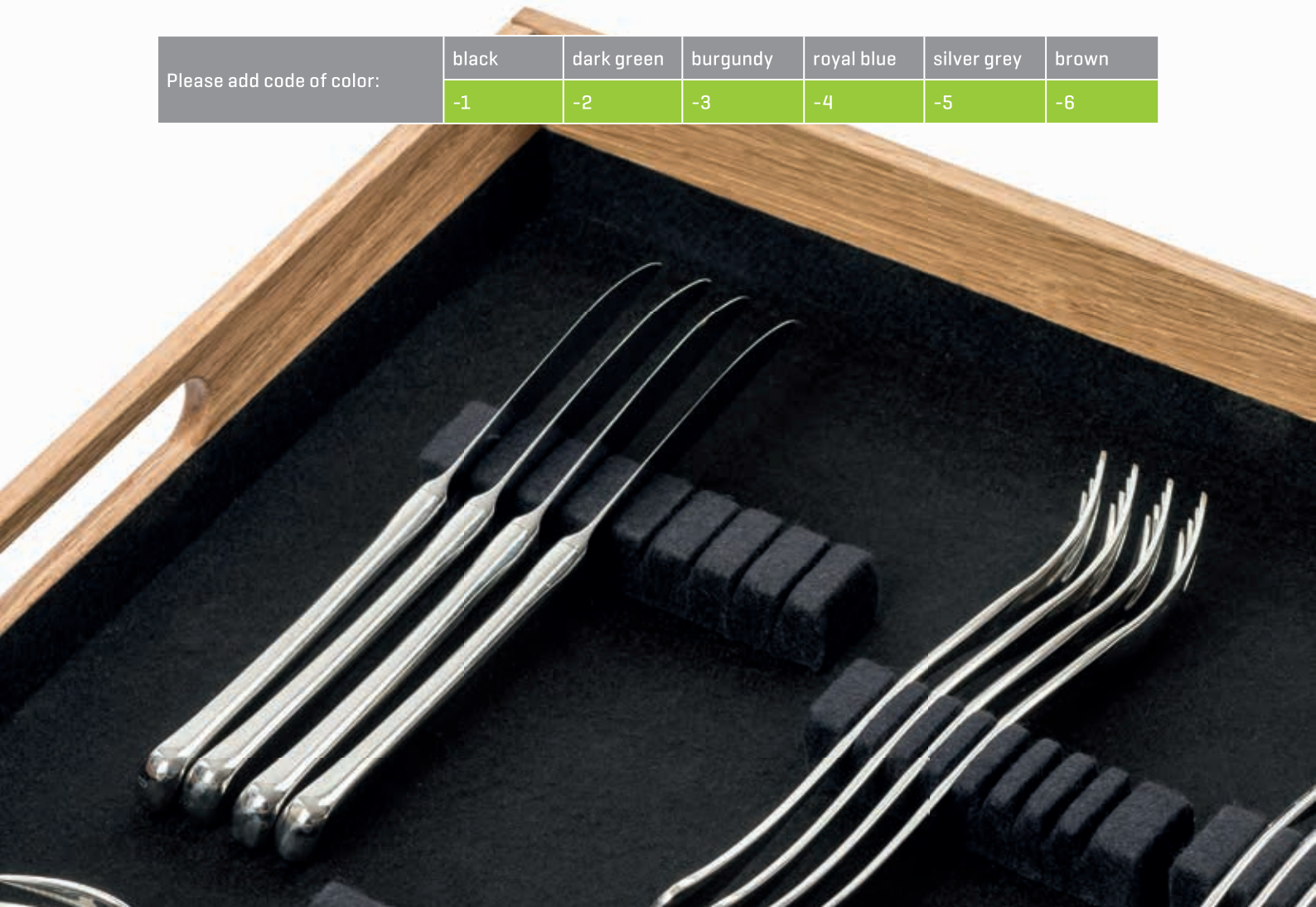
*bars: solid wood · profile 50/9mm or 65/9mm
ground: plywood covered with felt · thickness circa 4mm*



article	width	ARGENTUM base plate
base plate	0-550mm	11PA 0006-
base plate	551-850mm	11PA 0009-
base plate	851-1150mm	11PA 0012-

article	width	ARGENTUM PUR		ARGENTUM DELUXE	
		height 54mm	height 65mm	height 50mm	height 65mm
cutlery inserts	0-250mm	11PA 0305-	11PA 0306-	11DA 0305-	11DA 0306-
cutlery inserts	251-350mm	11PA 0405-	11PA 0406-	11DA 0405-	11DA 0406-
cutlery inserts	351-450mm	11PA 0505-	11PA 0506-	11DA 0505-	11DA 0506-
cutlery inserts	451-550mm	11PA 0605-	11PA 0606-	11DA 0605-	11DA 0606-
cutlery inserts	551-650mm	11PA 0705-	11PA 0706-	11DA 0705-	11DA 0706-
cutlery inserts	651-750mm	11PA 0805-	11PA 0806-	11DA 0805-	11DA 0806-
cutlery inserts	751-850mm	11PA 0905-	11PA 0906-	11DA 0905-	11DA 0906-
cutlery inserts	851-950mm	11PA 1005-	11PA 1006-	11DA 1005-	11DA 1006-
cutlery inserts	951-1050mm	11PA 1105-	11PA 1106-	11DA 1105-	11DA 1106-
cutlery inserts	1051-1150mm	11PA 1205-	11PA 1206-	11DA 1205-	11DA 1206-

Please add code of color:	black	dark green	burgundy	royal blue	silver grey	brown
	-1	-2	-3	-4	-5	-6





ARGENTUM CABINET

We plan the complete cabinet for your silver cutlery. Based on our ARGENTUM DELUXE cutlery tray, we manufacture the cabinet according to individual dimensions, in eight types of wood and six felt colors. Every part of your fine cutlery will find a safe place in it.

We would be happy to make you an offer based on a list of your silvery.

ARGENTUM accessories

adhesive felt

Our felt with an adhesive film on the back for sticking in existing drawers. We deliver it made to measure.

cutlery holders

With our cutlery holders, you can keep your silver cutlery organized and protected from scratches. They are made of wood and covered with anti-tarnish felt. You can order them individually for your cutlery.

felt covers

In addition to the cutlery holders, we also offer anti-tarnish felt covers in matching colours.

cutlery rolls

If you want to store your silver cutlery in a space-saving or transportable way, you can use our classic cutlery rolls with pockets for the cutlery. Cotton outside, anti-tarnish felt inside.

article	model	black	dark green	burgundy	royal blue	silver grey	brown
adhesive felt	width 0-550mm	11PA 20061	11PA 20062	11PA 20063	11PA 20064	11PA 20065	11PA 20066
adhesive felt	width 551-850mm	11PA 20091	11PA 20092	11PA 20093	11PA 20094	11PA 20095	11PA 20096
adhesive felt	width 851-1150mm	11PA 20121	11PA 20122	11PA 20123	11PA 20124	11PA 20125	11PA 20126
set of holders	for each 6 knives, forks, spoons, cake forks, coffee spoons	HST30 SW	HST30 GN	HST30 RT	HST30 BL	HST30 GR	HST30 BR
set of holders	for each 8 knives, forks, spoons, cake forks, coffee spoons	HST40 SW	HST40 GN	HST40 RT	HST40 BL	HST40 GR	HST40 BR
set of holders	for each 12 knives, forks, spoons, cake forks, coffee spoons	HST60 SW	HST60 GN	HST60 RT	HST60 BL	HST60 GR	HST60 BR
set for service pieces	for 5 large service pieces, 3 service pieces, 6 small service pieces, 1 sugar-tongs, 1 cake server, 1 soup laddle	HST17 SW	HST17 GN	HST17 RT	HST17 BL	HST17 GR	HST17 BR
felt cover	dimensions 40 x 45cm	HAD40 SW	HAD40 GN	HAD40 RT	HAD40 BL	HAD40 GR	HAD40 BR
felt cover	dimensions 70 x 45cm	HAD70 SW	HAD70 GN	HAD70 RT	HAD70 BL	HAD70 GR	HAD70 BR
felt cover	dimensions 90 x 65cm	HAD90 SW	HAD90 GN	HAD90 RT	HAD90 BL	HAD90 GR	HAD90 BR

CARGO | NEO | STELLA

boxes for high pull-outs

Order your high pull-outs: We offer the right solutions for storing a wide variety of utensils and food. For each range of cutlery inserts, we offer the corresponding pull-out dividers for drawers with an internal height of at least 140mm. There are three extensive pull-out programs named CARGO, NEO and STELLA. With these programs, the space in high pull-outs can be used optimally and be fitted out precisely. The modular structure of them makes it easy to combine all items as desired. We offer suggestions for combinations in sets or order the single items.

bars of CARGO: veneered multiplex with visible edges · profile 140/7.5mm

bars of NEO: veneered multiplex at all sides · profile 140/7.5mm

bars of STELLA: solid wood · profile 140/6mm

ground of all: grooved, veneered plywood · thickness circa 4mm



CARGO | modern organization for high pull-outs

Without veneer on the top edges, the multiplex layers remain visible at the CARGO. Because of this the program fits perfectly with the EMPLEX or SINEX series. All frames of the CARGO program are mitred, what gives a real good stability to the items.

material: veneered multiplex with visible edges

profile: 140/7.5mm

connection: on mitre



maple

beech

oak

ash

ash black

walnut

smoked oak



wengé

NEO | classic organization for high pull-outs

The rectangular bars of the NEO are veneered on all sides, so it fits perfectly with the AERIK, CLASSIC and MILANO series. All frames of the NEO program are mitred, what gives a real good stability to the items.

material: veneered multiplex at all sides

profile: 140/7.5mm

connection: on mitre



maple

beech

oak

ash

ash black

walnut

smoked oak



wengé

STELLA | premium organization for high pull-outs

Our premium program for pull-outs. All frames are finger-jointed, the best connection for a wooden frame. The strips made of 6mm thin solid wood fit with the URBAN series as well as the CLASSIC series.

material: solid wood

profile: 140/6mm

connection: finger-jointed



oak

ash black

walnut

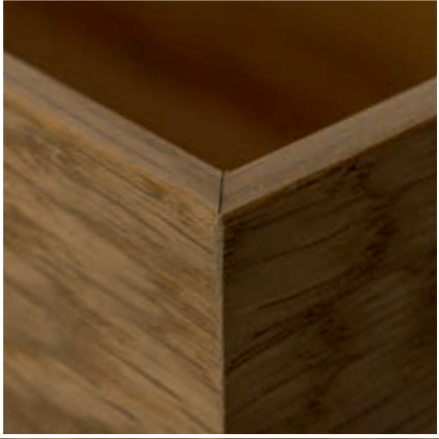
smoked oak

wengé

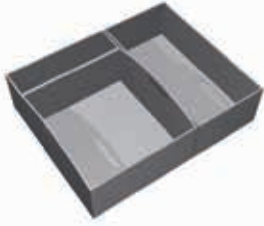
STELLA




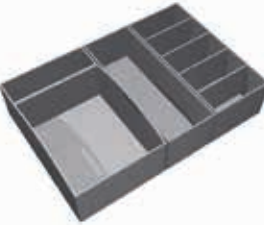
CARGO




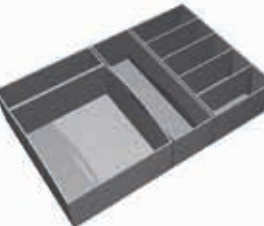
NEO


pull-out division set 61	program	order number
	NEO	11NE NS061
	CARGO	11CA CS061
	STELLA	11ST SS061
	handle-box + BoxL	

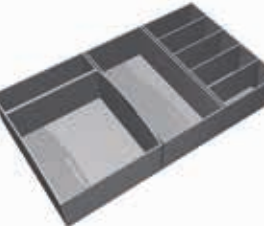
pull-out division set 62	program	order number
	NEO	11NE NS062
	CARGO	11CA CS062
	STELLA	11ST SS062
	TwoM + BoxL + Vitrum2	


pull-out division set 81	program	order number
	NEO	11NE NS081
	CARGO	11CA CS081
	STELLA	11ST SS081
	handle-box + BoxL + DivixM	

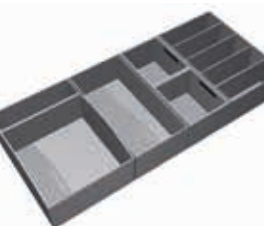
pull-out division set 82	program	order number
	NEO	11NE NS082
	CARGO	11CA CS082
	STELLA	11ST SS082
	Vitrum1 + TwoM + BoxL + Vitrum2	


pull-out division set 91	program	order number
	NEO	11NE NS091
	CARGO	11CA CS091
	STELLA	11ST SS091
	handle-box + BoxL + DivixL	


pull-out division set 92	program	order number
	NEO	11NE NS092
	CARGO	11CA CS092
	STELLA	11ST SS092
	Vitrum1 + TwoM + BoxX + Vitrum2	

pull-out division set 101	program	order number
	NEO	11NE NS101
	CARGO	11CA CS101
	STELLA	11ST SS101
	handle-box + BoxL + DivixL	

pull-out division set 102	program	order number
	NEO	11NE NS102
	CARGO	11CA CS102
	STELLA	11ST SS102
	Vitrum1 + TwoM + BoxX + Vitrum2	

pull-out division set 121	program	order number
	NEO	11NE NS121
	CARGO	11CA CS121
	STELLA	11ST SS121
	handle-box + BoxX + handle-box + DivixL	

pull-out division set 122	program	order number
	NEO	11NE NS122
	CARGO	11CA CS122
	STELLA	11ST SS122
	Vitrum1 + TwoM + BoxX + DivixL + Vitrum2	

pull-out division set 63	program	order number
	NEO	11NE NS063
	CARGO	11CA CS063
	STELLA	11ST SS063
	Pane + BoxL	

cabinet: 60 cm

pull-out division set 83	program	order number
	NEO	11NE NS083
	CARGO	11CA CS083
	STELLA	11ST SS083
	Pane + BoxX + Alfa	

cabinet: 80 cm

pull-out division set 93	program	order number
	NEO	11NE NS093
	CARGO	11CA CS093
	STELLA	11ST SS093
	Pane + BoxL + DivixM + Alfa	

cabinet: 90 cm

pull-out division set 103	program	order number
	NEO	11NE NS103
	CARGO	11CA CS103
	STELLA	11ST SS103
	Pane + BoxL + DivixL + Alfa	

cabinet: 100 cm

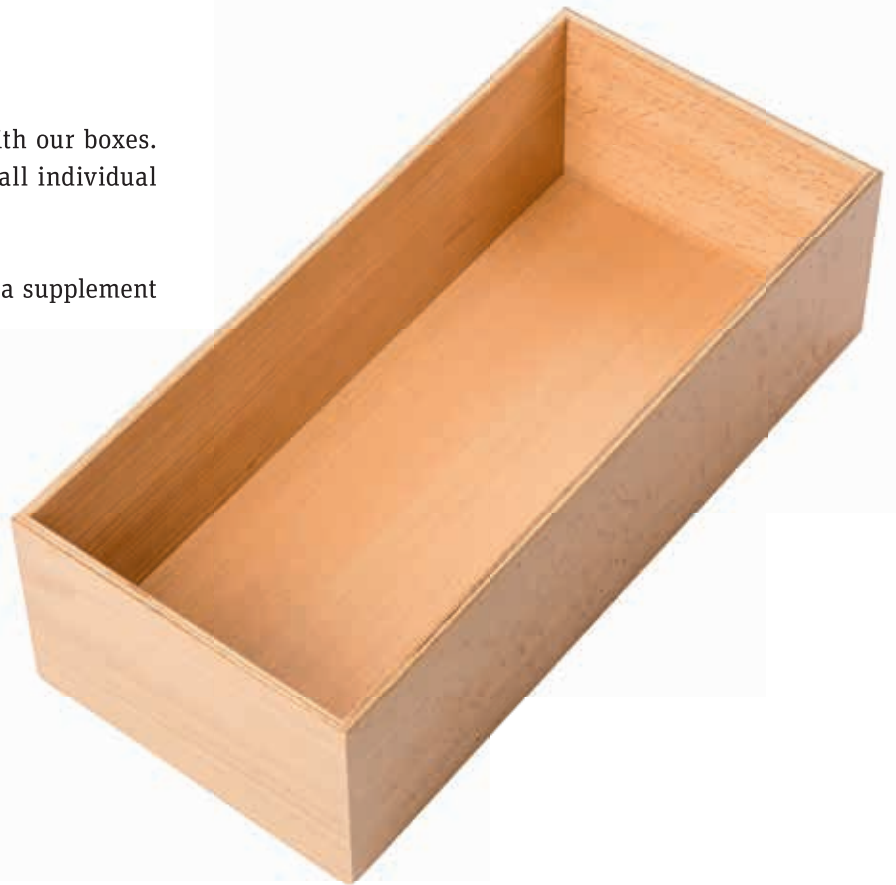
pull-out division set 123	program	order number
	NEO	11NE NS123
	CARGO	11CA CS123
	STELLA	11ST SS123
	Pane + BoxL + TwoM + DivixM + Alfa	

cabinet: 120 cm

Boxes

Create tidiness in the high pull-out with our boxes. The boxes are custom-made to nearly all individual dimensions.

They are therefore very well suited as a supplement to fully equip pull-outs.



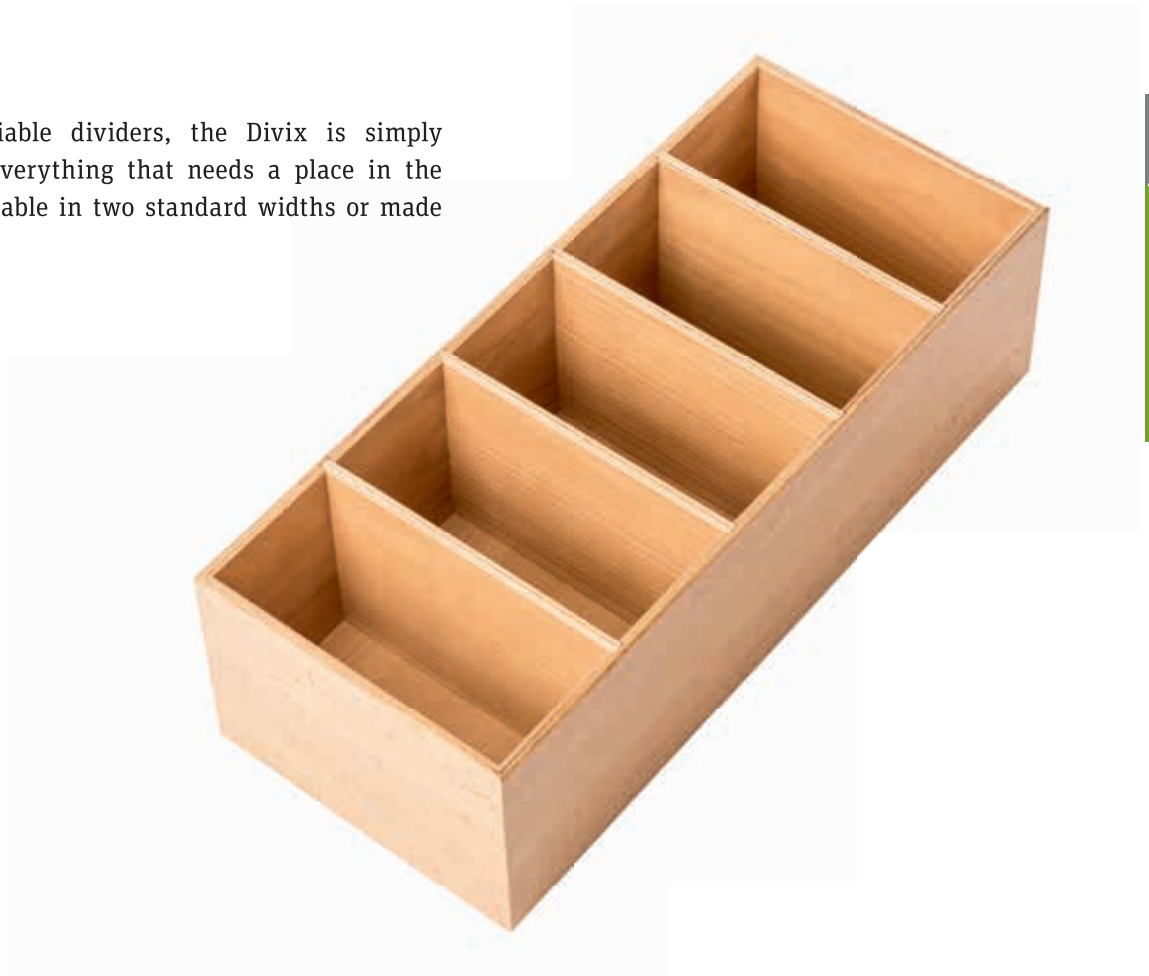
Handle-boxes

The extension of the simple box is manufactured with two milled handles. We recommend two handle-boxes in a row, which fill the drawer precisely in depth. With the handles, the boxes can easily be taken out of the pull-out.



DIVIX

With its variable dividers, the Divix is simply suitable for everything that needs a place in the kitchen. Available in two standard widths or made to measure.



article	order no. NEO	order no. CARGO	order no. STELLA	width	depth
Box	11NE NBOXS	11CA CBOXS	11SA SBOXS	up to 200mm	up to 250mm
Box	11NE NBOXM	11CA CBOXM	11SA SBOXM	up to 350mm	up to 250mm
Box	11NE NBOXL	11CA CBOXL	11SA SBOXL	up to 200mm	up to 500mm
Box	11NE NBOXX	11CA CBOXX	11SA SBOXX	up to 350mm	up to 500mm
handle-box	11NE NPAPS	11CA CPAPS	11SA SPAPS	200mm	up to 250mm
handle-box	11NE NPAPM	11CA CPAPM	11SA SPAPM	350mm	up to 250mm
handle-box	11NE NPAPL	11CA CPAPL	11SA SPAPL	200mm	up to 500mm
handle-box	11NE NPAPX	11CA CPAPX	11SA SPAPX	350mm	up to 500mm
Divix	11NE NDIVM	11CA CDIVM	11SA SDIVM	200mm	up to 500mm
Divix	11NE NDIVL	11CA CDIVL	11SA SDIVL	300mm	up to 500mm

VITRUM

Our VITRUM storage can holders with three or four glass cans are ideal for storing food. The VITRUM1 item consists of a wooden holder including four storage jars with a volume of around 1 liter. The VITRUM2 contains three glasses of 2 liters each. The cans are simply ideal for storing coffee, cocoa, flour, sugar, cornflakes and cereals. The lids of the storage jars are manufactured in the same type of wood type as the holders.

Storage jars for VITRUM

Our storage jars are also available single.

The smaller ones of our storage jars have a content of one liter, a diameter of about 96mm and a height of 170mm.

The larger ones of our storage jars have a content of two liters, a diameter of about 116mm and a height of 230mm.



article	order no. NEO	order no. CARGO	order no. STELLA	width
can holder VITRUM1	11NE NVIT1	11CA CVIT1	11ST SVIT1	200mm
can holder VITRUM2	11NE NVIT2	11CA CVIT2	11ST SVIT2	200mm



TWO

Up to ten bottles can be safely stored in the pull-out with our bottle holder TWO. This modul has no ground but can optionally be ordered with a small stainless steel bowl. This makes it easier to clean the drawer from remains of vinegar and oil.

The size of each compartment is at least 80 x 80mm.



article	order no. NEO	order no. CARGO	order no. STELLA	width
bottle holder TWO	11NE NTWOM	11CA CTWOM	11SA STWOM	200mm
bowl for TWO	10HA TWOVA	10HA TWOVA	10HA TWOVA	200mm
box JUNO	11NE NJUNO	11CA CJUNO	11SA SJUNO	300mm
box PANE	11NE NPANE	11CA CPANE	11SA SPANE	300mm
kitchen roll holder ALFA	11NE NALFA	11CA CALFA	11SA SALFA	150mm



JUNO

The large storage box JUNO with its width of 300mm is supplied with our MONTREAL cutting board. The cutting board acts as a lid, so for example, even bread can be stored in the box.



75

CARGO INEO | STELLA



PANE

Our new porcelain bread bin comes with a lid made of solid wood. This keeps your bread fresh for a longer time. The bread bin has an oval outline of about 350 x 230mm and a height of 135mm including the lid.

ALFA

The holder for kitchen rolls fits perfectly with all other modules of our pull-out series. It has a lid made of stainless steel with a tear-off edge. The compartment for the kitchen roll has a length of about 350mm.



BASE | perforated boards for crockery and pots

Simple principle with a maximum of flexibility: High pull-outs can easily be structured with perforated boards and wooden pegs. The perforated boards made of veneered MDF are available in all of our wood species. They are cut to any needed measurement.

The wooden pegs are fixed to the board from below using a knurled screw. Thanks to the rows of holes, the pull-out can be structured individually.

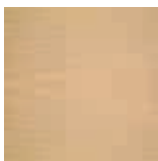
ground: veneered MDF · thickness circa 11mm

possible dimensions:

width: up to 1150mm · depth: up to 650mm

pegs: solid wood, 160/25mm

wood species



maple



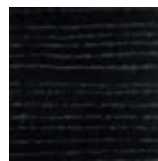
beech



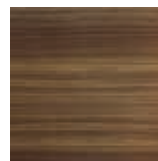
oak



ash



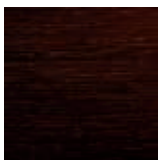
ash black



walnut



smoked oak



wengé



width	BASE board	BASE board including set of pegs
0-250mm	11LP CL030	11LP CL031
251-350mm	11LP CL040	11LP CL041
351-450mm	11LP CL050	11LP CL051
451-550mm	11LP CL060	11LP CL061
551-650mm	11LP CL070	11LP CL071
651-750mm	11LP CL080	11LP CL081
751-850mm	11LP CL090	11LP CL091
851-950mm	11LP CL100	11LP CL101
951-1050mm	11LP CL110	11LP CL111
1051-1150mm	11LP CL120	11LP CL121
peg	11LP GS010	
BASE Trias	11LP TRIAS	

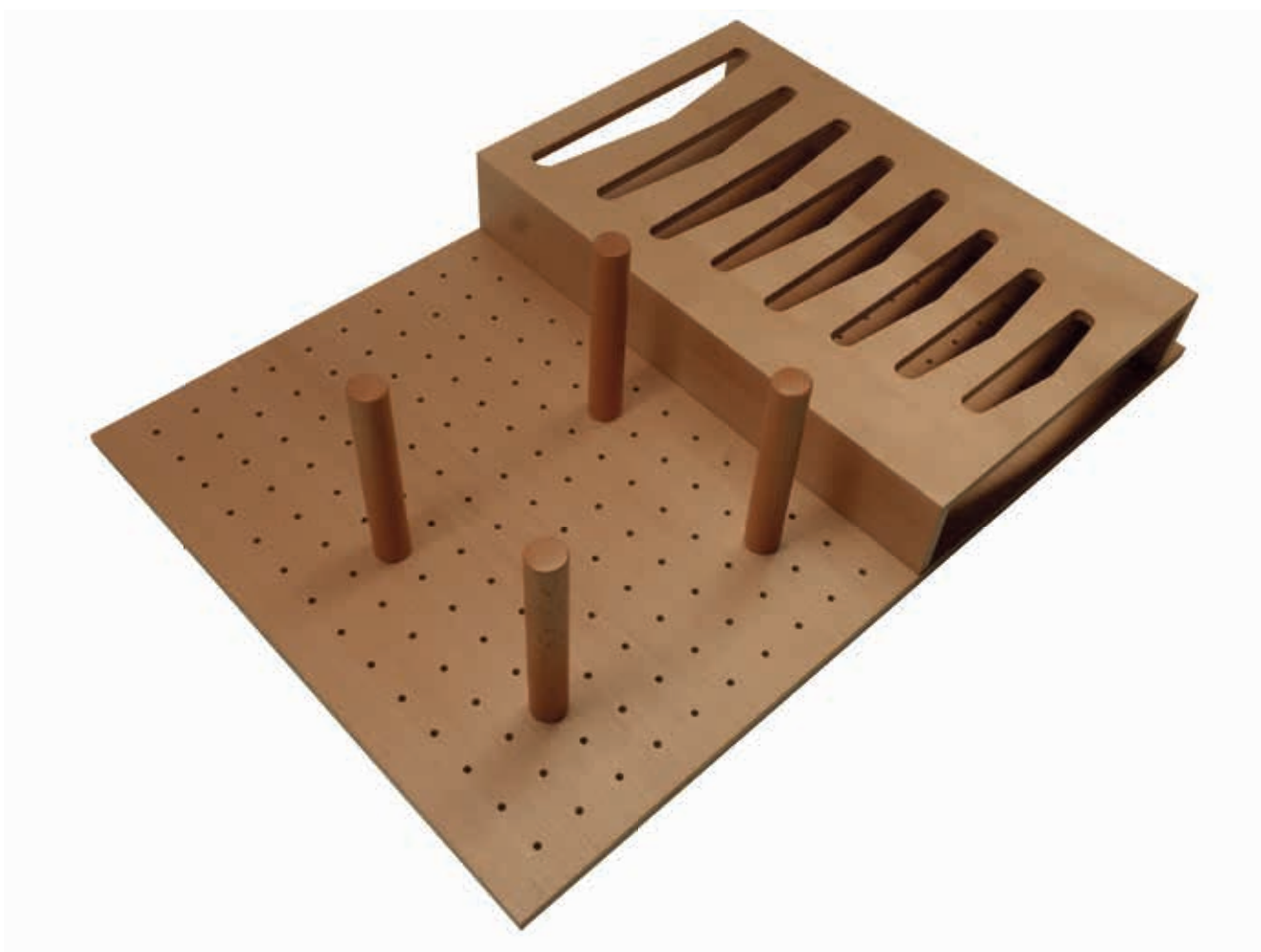


BASE | perforated boards

The simple and effective principle of our perforated boards in combination with the wooden pegs brings order to plates, pots and other crockery.

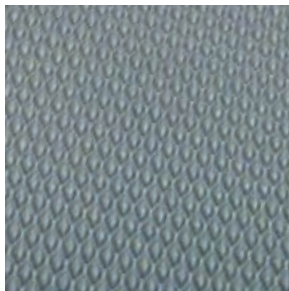
TRIAS | holder for pot lids

The TRIAS holder is our answer how to put pot lids space saving in the drawer. The sizes of the slots are designed for all common pot lids.



ARMA | anti-slip mats

Anti-slip mats made of natural rubber are a good addition if it is not yet clear what exactly is to be stored in the pull-out. They are cut to each individual size. Extra depths are possible on request.



prism silver grey



prism orion grey



prism black

width	length	silver grey	orion grey	black
0-250mm	0-500mm	11HA AM030 GR	11HA AM030 OR	11HA AM030 SW
251-350mm	0-500mm	11HA AM040 GR	11HA AM040 OR	11HA AM040 SW
351-450mm	0-500mm	11HA AM050 GR	11HA AM050 OR	11HA AM050 SW
451-550mm	0-500mm	11HA AM060 GR	11HA AM060 OR	11HA AM060 SW
551-650mm	0-500mm	11HA AM070 GR	11HA AM070 OR	11HA AM070 SW
651-750mm	0-500mm	11HA AM080 GR	11HA AM080 OR	11HA AM080 SW
751-850mm	0-500mm	11HA AM090 GR	11HA AM090 OR	11HA AM090 SW
851-950mm	0-500mm	11HA AM100 GR	11HA AM100 OR	11HA AM100 SW
951-1050mm	0-500mm	11HA AM110 GR	11HA AM110 OR	11HA AM110 SW
1051-1150mm	0-500mm	11HA AM120 SW	11HA AM120 OR	11HA AM120SW

PULL | solutions for garbage cans

Our solution for a clean and easy-care garbage can in the pull-out. The system PULL is made of veneered and laquered MDF. The PULL is made to measure to the drawer and has got cut-outs for the included waste bins. The choice between various standard heights makes it possible to plan the PULL in almost any pull-out.

Here are the dimensions of the garbage cans:

height 216mm: 6l / 10l / 13l

height 256mm: 7l / 12l / 16l

height 326mm: 10l / 16l / 22l

height 426mm: 12l / 21l / 28l



width of cabinet	height 216mm	height 256mm	height 326mm	height 426mm	equipment [e.g. height 256mm]
600mm	11PU 06011	11PU 06021	11PU 06031	11PU 06041	3x garbage can [1x16l / 2x7l]
800mm	11PU 08011	11PU 08021	11PU 08031	11PU 08041	3x garbage can [1x16l / 2x12l]
900mm	11PU 09011	11PU 09021	11PU 09031	11PU 09041	4x garbage can [2x16l / 2x7l]
1000mm	11PU 10011	11PU 10021	11PU 10031	11PU 10041	4x garbage can [2x16l / 2x7l]
1200mm	11PU 12011	11PU 12021	11PU 12031	11PU 12041	5x garbage can [3x16l / 2x7l]

MORE FOR THE KITCHEN

Some things should not be missing in any kitchen. They are sometimes stowed away in a drawer or cupboard, but trays, bottle holders or chopping boards are often left open on the worktop. Crafted by us with the best quality craftsmanship, these things match our drawer interiors perfectly. The warm character of the wood rounds off the overall picture of a kitchen and creates a homely ambience.

DETROIT | butcherblock

The heavy butcherblock is made from 60mm thick oak. Thanks to its own weight, it lies firmly and safely on the work surface. With the two handle millings, the board can still be worked with very well.

dimensions: 320 x 445 x 60mm



MONTREAL | cutting board

The large cutting board made of solid wood is available in beech, oak, ash and walnut. With its two handle millings, the board can still be worked with very well.

dimensions: 472 x 300 x 30mm

QUEBEC | tray

The QUEBEC tray can be ordered in all of our types of wood. With its finger-jointed frame, it is a real classic.

dimensions: 472 x 350 x 50mm

TWORRY | bottle carrier

The TWORRY bottle carrier has got a handle for carrying and a solid, grooved ground. You can carry up to eight bottles with it. Available in all of our types of wood.

dimensions: 200 x 380 x 225mm (W x L x H)



article	order number	dimensions
butcherblock DETROIT	10BR DET34	320 x 445 x 60mm
cutting board MONTREAL	10BR M0130	472 x 300 x 30mm
tray QUEBEC	10BR ZTTQC	472 x 350 x 50mm

article	order no. NEO	order no. CARGO	order no. STELLA	width	depth
bottle carrier TWORRY	11NE NTWOA	11CA CTWOA	11SA STWOA	200mm	380mm

Measuring

In the pictures below you can see which dimensions must be given and how to measure them in order to get a cutlery insert that fits perfectly.

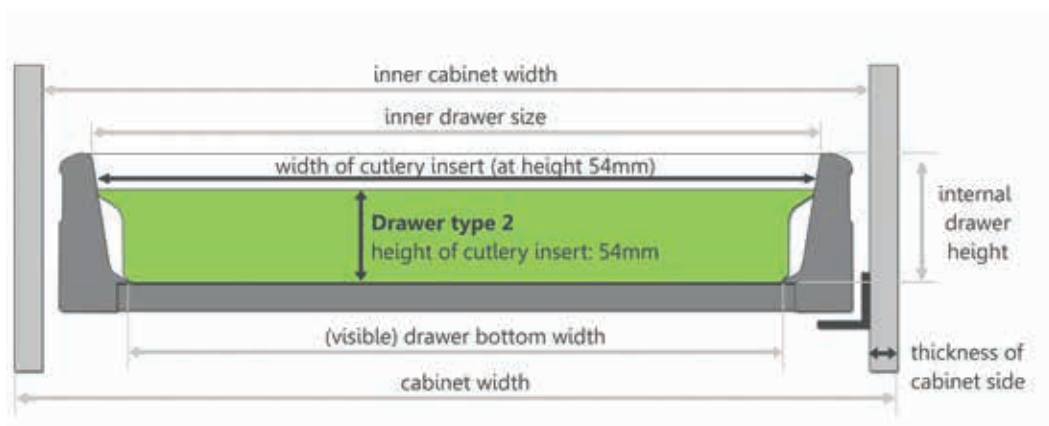
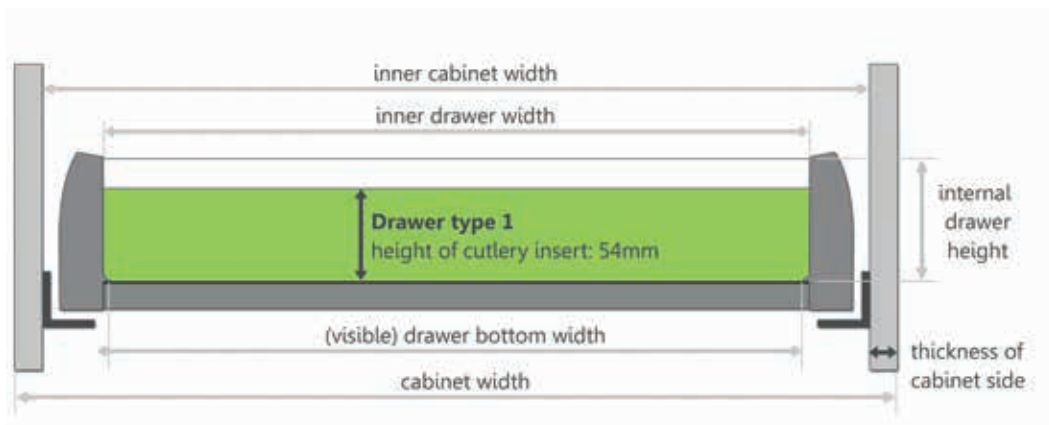
The standard height of the cutlery insert is 54mm.

The length of the cutlery insert is: inside length of the drawer minus 2mm.

The width of the cutlery insert is: inside width of the drawer (measured at a height of 54mm) minus 2mm.

If the drawer runs straight down the sides, please state “frame type 1” when inquiring or ordering. A small edge at the bottom of the drawer (up to 4mm) is also compensated with this shape.

If the drawer runs diagonally downwards on the sides, please specify „frame type 2“ when inquiring or ordering. The ground can be up to 36mm narrower than the cutlery insert at the top edge.



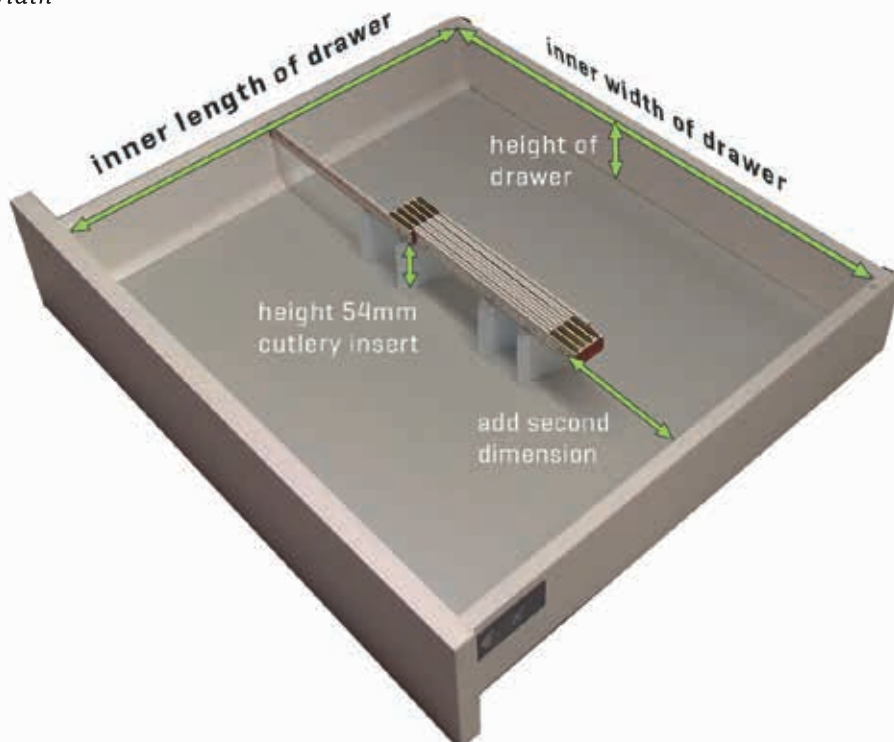
Standard dimensions

	Blum Tandembox	Blum Legrabox/ Grass Vionaro/ Hettich AvanTech	Grass NovaPro	Grass DWD-XP	Hettich ArciTech
drawer sides	slanting [2]	straight [1]	straight [1]	slanting [2]	slanting [2]
depth	NL - 28mm	NL - 28mm	NL - 21mm	NL - 28mm	NL - 28mm
width of ground anti-slip mat ARMA	LM - 84mm	LM - 44mm	LM - 66mm	LM - 82mm	KB - 122mm
width of cutlery insert CLASSIC / EMPLEX / MILANO / URBAN	LM - 50mm	LM - 44mm	LM - 60mm	LM - 64mm	KB - 108mm
width of base plate ARGENTUM / SINEX	LM - 78mm	LM - 44mm	LM - 60mm	LM - 82mm	KB - 120mm
width of pull-out divisions NEO / CARGO / STELLA / PULL	LM - 72mm	LM - 44mm	LM - 60mm	LM - 78mm	KB - 120mm
width of perforated board BASE	LM - 68mm	LM - 44mm	LM - 60mm	LM - 78mm	KB - 120mm

LM = inner cabinet width = cabinet width minus 2x thickness of cabinet sides

NL = nominal length

KB = cabinet width



stratmann

wooden cutlery inserts

Niedringhausener Str. 173
D-32609 Hüllhorst

Fon: +49 5744 622
Fax: +49 5744 4534

www.stratmann-accessories.com
info@stratmann-accessories.com

© 2022

